



The University of Queensland Tennis Club Inc.

# 2008 FASTENNIS Singles Challenge Tournament

to be played at The University of Queensland Tennis Centre, Blair Drive, St Lucia

## 8 a.m. - 1 p.m. Sunday 13 April

**Entries close: Thursday 3 April**

The tournament will be played using the FASTENNIS format.  
Entry is restricted to players who are current members of  
The University of Queensland Tennis Club Inc.

In FASTENNIS, a set is won by the player who is first to win 21 points.

The tournament will be played using a consolation draw format which  
guarantees that all entrants get multiple matches.

See overleaf for the Conditions of Entry

WILSON AUSTRALIAN OPEN Tennis Balls will be used in this tournament



**2008 FASTENNIS Singles Challenge Tournament - Entry Form**

*Please Print Clearly*

Entries close: Thursday, 3 April

Post entries to: UQ Tennis Club, PO Box 6005, St Lucia 4067

SURNAME:..... FIRST NAME:.....

POSTAL ADDRESS:.....P/C.....

E-MAIL (print clearly):.....

PHONE: Home..... Work..... Mobile.....

CURRENT ITN & FIXTURE GRADE: Current ITN:.....

Association	Competition	Grade	Team
.....	.....	.....	.....

.....

**TOTAL FEES ENCLOSED**

If paying by cheque, make payable to UQ Tennis Club

**\$18\***

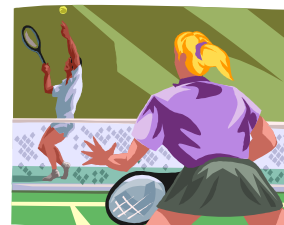
\* includes GST

I have read and accept the Conditions  
of Entry and enclose all fees.

*N.B. Late entries and entries without fees not accepted*

Signature.....

# 2008 FASTENNIS Singles Challenge Tournament



## CONDITIONS OF ENTRY

1. The tournament is approved by Tennis Queensland and shall be conducted in accordance with the Rules of the Game adopted by Tennis Australia, the Tennis Australia FASTENNIS Rules, the Tournament Rules & Regulations laid down by Tennis Queensland and the Tennis Australia Code of Conduct.
2. Entry is restricted to players who are current financial members of The University of Queensland Tennis Club Inc.
3. The Tournament Management Committee, hereinafter referred to as the "Committee", shall have the entire control and management of the tournament. Any matter not specifically covered by these Conditions shall be resolved by the Committee, whose decision shall be final.
4. Entries must be submitted on the prescribed entry form. Each player must complete a separate entry form which must be completed in full, signed to confirm acceptance of the Tournament Conditions and lodged with the entry fee by 10 p.m. on Thursday 3 April. Entries must be sent to the UQ Tennis Club.
5. Payment may be made by Cash, Cheque, Money Order, Credit Card (\$4 credit card service fee applies) or Debit Card (\$2 debit card service fee applies). If paying by cheque or money order, make payable to The University of Queensland Tennis Club Inc. (or UQ Tennis Club). Credit card payments may be made by post, fax or e-mail by completing the authority below (MasterCard or Visa Card only).
6. Any player may withdraw prior to the draw being made and the entry fee less relevant administrative expenses shall be refunded. No entry fees shall be refunded where a player is defaulted or where a player withdraws after being placed in the draw and the courts booked.
7. Players of all standards and genders will compete in a single event; although the Committee reserves the right to divide players into groups, depending on entry numbers, with play-offs between group winners to determine over-all winners.
8. The event will be played using a consolation draw format such as the Continuous Play Draw, Feed-In Championship Draw or Compass Draw which guarantee that all entrants get multiple matches because players go into consolation rounds when they lose. The exact format will be decided by the Committee when the entry numbers are known.
9. Each match shall consist of one set but players shall be permitted a warm-up period of 3 minutes prior to their first set only.
10. Each set shall be played using the FASTENNIS format in which the set is won by the player who is first to win 21 points. Players serve in rotation with each server getting 5 serves, starting to the first court. Players change ends after 10 points. There is a sudden-death point if the score reaches 20-all. For the sudden-death point, the server next in order to serve, serves the point but the receiver gets to choose the side.
11. Although the tournament will be played as a single draw, prizes will be awarded for the best performed male and female players of the following standard - Open (equivalent to ITN 4 or above), A Grade (equivalent to ITN 5), B Grade (equivalent to ITN 6) and C Grade (equivalent to ITN 7 or lower); although the Committee reserves the right to reduce the number of levels depending on entry numbers. Provisional ITNs (International Tennis Numbers) will be assigned by the Committee on the basis of previous Fixture results, grading sessions and current Fixture grades.
12. All players must report to the Tournament Office 15 minutes before the scheduled start of play (i.e. by 7:45 a.m.). Entrants not ready to play at 8 a.m. may be defaulted.
13. In the event of rain preventing or interrupting play on Sunday 13 April, the tournament will be played or continued on Sunday 20 April.

**MAIL/FAX ENTRY PAYMENTS BY CREDIT CARD:**

Credit Card Type (please circle): MasterCard Visa

Card No. .... Expiry Date: ..... Card Holder's name: .....

By signing below, I authorise the UQ Tennis Club to charge my Credit Card the sum of \$ ..... plus a service fee of \$4.

Signature: .....

Date: .....