



The University of Queensland Tennis Club Inc.

2008 Doubles Surprise Challenge Tournament

to be played at The University of Queensland Tennis Centre, Blair Drive, St Lucia

9 a.m. - 2 p.m. Monday 5 May

Entries close: Thursday 24 April

Entry is restricted to players who are current members of
The University of Queensland Tennis Club Inc.

Players (all standards, male or female) will be paired initially through a random draw and allocated to numbered courts for the first match. After each match, the winners will move up a court and the losers will move down a court. Players will then switch partners for the next match. Gradually, during the morning, the better players will move towards the No. 1 court.

See overleaf for the Conditions of Entry

WILSON AUSTRALIAN OPEN Tennis Balls will be used in this tournament



2008 Doubles Surprise Challenge Tournament - Entry Form

Please Print Clearly

Entries close: Thursday, 24 April Post entries to: UQ Tennis Club, PO Box 6005, St Lucia 4067

SURNAME:..... FIRST NAME:.....

POSTAL ADDRESS:..... P/C.....

E-MAIL (print clearly):.....

PHONE: Home..... Work..... Mobile.....

CURRENT ITN & FIXTURE GRADE: Current ITN:.....

Association	Competition	Grade	Team
.....

TOTAL FEES ENCLOSED

If paying by cheque, make payable to UQ Tennis Club

\$16*

* includes GST

I have read and accept the Conditions of Entry and enclose all fees.

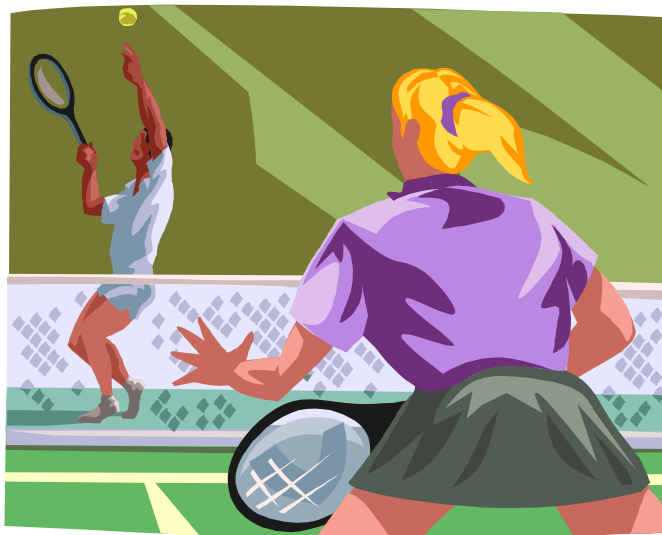
N.B. Late entries and entries without fees not accepted

Signature.....

2008 Doubles Surprise Challenge Tournament

CONDITIONS OF ENTRY

1. The tournament is approved by Tennis Queensland and shall be conducted in accordance with the Rules of the Game adopted by Tennis Australia, the Tournament Rules & Regulations laid down by Tennis Queensland and the Tennis Australia Code of Conduct.
2. Entry is restricted to players who are current financial members of The University of Queensland Tennis Club Inc.
3. The Tournament Management Committee, hereinafter referred to as the "Committee", shall have the entire control and management of the tournament. Any matter not specifically covered by these Conditions shall be resolved by the Committee, whose decision shall be final.
4. Entries must be submitted on the prescribed entry form. Each player must complete a separate entry form which must be completed in full, signed to confirm acceptance of the Tournament Conditions and lodged with the correct entry fee by Thursday 24 April.
5. Payment may be made by Cash, Cheque, Money Order, Credit Card (\$4 credit card service fee applies) or Debit Card (\$2 debit card service fee applies). Credit card payments may be made by post, fax or e-mail attachment by completing the authority below.
6. Any player may withdraw prior to entries being finalised and the entry fee less relevant administrative expenses shall be refunded. No entry fees shall be refunded where a player is defaulted or where a player withdraws after entries are finalised and the courts booked.
7. Players of all standards and genders will compete in a single event.
8. Players will be paired initially through a random draw and allocated to numbered courts for the first match. After each match, the winners will move up a court and the losers will move down a court (but the winners on the No. 1 court remain on that court and the losers on the bottom court remain on that court). Once the players have moved to their new court for the next match, they swap partners.
9. Each match shall consist of one set, a fixed number of games or play for a fixed time interval as decided by the Committee on the day. Players shall be permitted a warm-up period of 3 minutes prior to their first match only.
10. Although the tournament will be played as a single draw, prizes will be awarded for the best performed male and female players of the following standard - Open (equivalent to ITN 4 or above), A Grade (equivalent to ITN 5), B Grade (equivalent to ITN 6) and C Grade (equivalent to ITN 7 or lower); although the Committee reserves the right to reduce the number of levels or vary the level descriptions depending on entry numbers. ITNs (International Tennis Numbers) will be assigned by the Committee on the basis of previous Fixture results, grading sessions and current Fixture grades.
11. **All players must report to the Tournament Office 15 minutes before the scheduled start of play (i.e. by 8:45 a.m.). Entrants not ready to play at 9 a.m. shall be defaulted.**
12. In the event of rain preventing play on Monday 7 May, the tournament will be played on Sunday 11 May (8 a.m. to 1 p.m.).



MAIL/FAX ENTRY PAYMENTS BY CREDIT CARD:

Credit Card Type (please circle): MasterCard Visa

Card No. Expiry Date: Card Holder's name:

By signing below, I authorise the UQ Tennis Club to charge my Credit Card the sum of \$ plus a service fee of \$4.

Signature:

Date: